

Sample exam questions for YouScience® Industry Certifications

YouScience® Industry Certifications are designed to reflect real classroom learning and industry expectations. Developed by educators and validated by psychometric experts, these certifications feature a variety of question types—from knowledge-based to application-level—that accurately measure student competency in career pathways.

To give you an idea of the types of items included on certifications, below are examples of real questions across various career clusters.

21st Century Skills

Multiple choice – standard

[Edit](#) [Preview](#)

Sam's supervisor gives him an assignment to fill the next customer order. He takes him through the process, step by step. When he leaves, Sam realizes that he cannot remember the directions required for the project. What could Sam have done to help him remember the directions that were given to him?

- ☐ Just guess the steps
- ☐ Search the internet
- ☐ Take notes
- ☐ Call his supervisor for help

Multiple choice – standard

[Edit](#) [Preview](#)

Amy is calculating her take-home pay (or "net income") from her first weekly paycheck. She worked 32 hours at \$14.00 per hour, and had \$70 of federal tax and \$15 of state tax withheld from her paycheck. What is Amy's net income?

- ☐ \$468
- ☐ \$533
- ☐ \$363
- ☐ \$348

Hospitality & Tourism Cluster > Culinary

Standard set: Culinary I Standard: Standard 7 - Breads

Reference: 1141759

Settings Edit Preview

Match each term with its correct definition. (Drag-and-drop your answer to the appropriate box.)

Expansion of carbon dioxide when put into a preheated oven	
Final rise of dough prior to baking	
Combining flour and liquid to form a dough and working it to develop the gluten	
Process of yeast breaking down sugar to create carbon dioxide	

Proofing Oven spring Knead Fermentation

Business Marketing Cluster > Business Office Specialist

Standard set: Commercial Photography II - retired Standard: Standard 5 - Principles of Art, Design, and Composition

Reference: 28740

Which principle of composition does this image represent?



- ☐ Symmetrical
- ☐ Framing
- ☐ Mergers
- ☐ Asymmetrical

Standard set: Business Office Specialist Standard: Standard 2 - Advanced Spreadsheet Skills

Reference: 1145323

What formatting is applied to row 1?

High School Team Scores									
1	Team								
2	Captain	Team	Gender	Age	Final Game 1	Final Game 2	Final Game 3	Total Score	Average Ranking
3	Brady	Green	M	14	55.00	55.00	70.00	180.00	60.00 7
4	Ralph	Blue	M	15	39.00	60.00	47.00	146.00	48.67 8
5	Julia	Orange	F	15	86.00	81.00	96.00	263.00	87.67 2
6	Jason	Yellow	M	16	89.00	76.00	83.00	248.00	82.67 4
7	Rebecca	Purple	F	17	67.00	53.00	89.00	209.00	69.67 5
8	Thomas	Red	M	17	96.00	101.00	101.00	298.00	99.33 1
9	Alexis	Copper	F	18	82.00	57.00	61.00	200.00	66.67 6
10	Tiffany	Gold	F	18	77.00	96.00	80.00	253.00	84.33 3

- ☐ Italics
- ☐ Sort and filter
- ☐ Merge and center
- ☐ Merge

Standard set: Business Office Specialist Standard: Standard 4 - Database Skills

Reference: 1145290

Settings Edit Preview

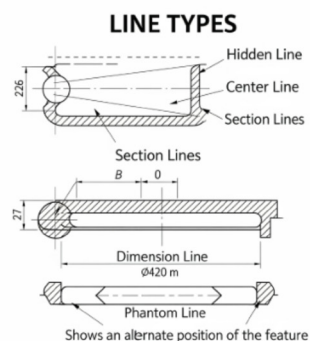
Match each term with its correct description. (Drag-and-drop your answer to the appropriate box.)

Contains customized information for each item/person	
A category of information in a data source	
A complete set of information for one item or individual	
Unique value for each row of data	

Data Record Primary Key Data Source Data Field

STEM > Engineering Technology

Identify the line types on the image.



- ☐ Center
- ☐ Hidden
- ☐ Section
- ☐ Dimension

Health Science > NCHSE/Health Science

Standard set: Medical Anatomy and Physiology **Standard:** Standard 2 - Basic Principles of Body Chemistry

Reference: 1150462

Which of the following pH values would be within the normal limits of blood pH?

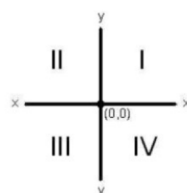
- ☐ 7.4
- ☐ 7.0
- ☐ 6.0
- ☐ 6.4

Architecture & Construction > Construction Trades

Standard set: CAD Mechanical Design I - retired **Standard:** Standard 4 - Mathematics, Measuring Conventions & Scale

Reference: 27602

If a line is drawn 10 inches long at a 225-degree angle, starting at the origin (0, 0), in which quadrant would it occur?



- ☐ Quadrant I
- ☐ Quadrant IV
- ☐ Quadrant III
- ☐ Quadrant II



Learn more about YouScience® Industry Certifications

Scan the QR code to schedule a demo and explore how Industry Certifications can support your CTE program.